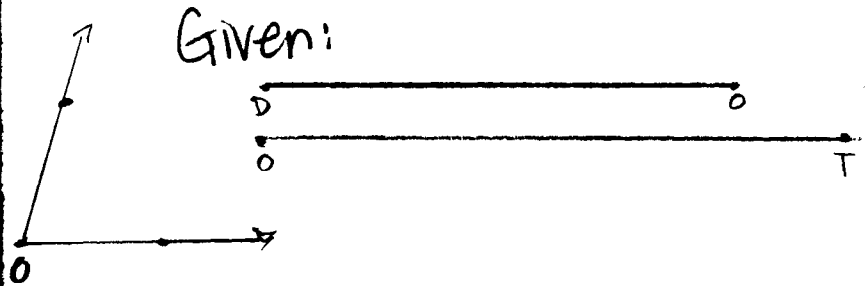
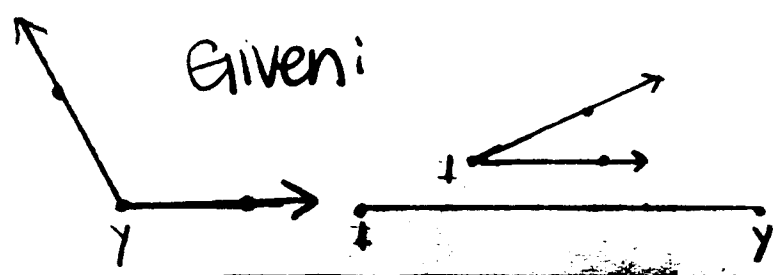


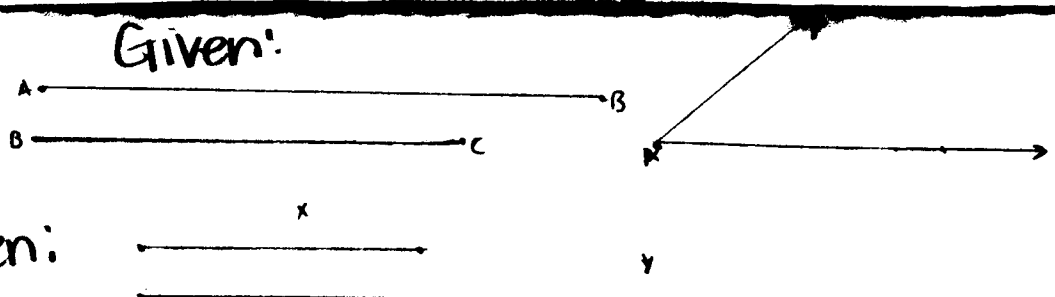
① Construct ΔMAS



② Construct ΔDOT



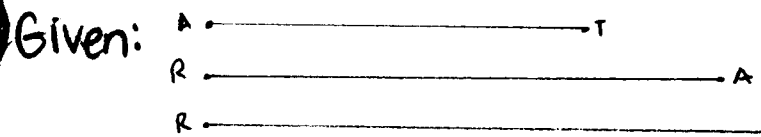
③ Construct ΔIGY



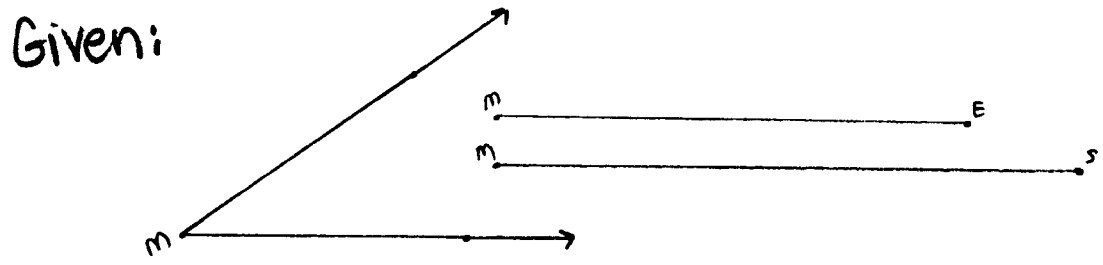
④ Construct 2 different Δs .

Given: x y
 Construct Isosceles ΔCAT with a perimeter equal to y and a base length equal to x .

Given: z Construct an isosceles right Δ with z the length of each of the 2 \cong sides.



Construct: ① ΔRAT ② Median \overline{TM} ③ angle bisector \overline{RB}



Construct:
 ① ΔMSE
 ② \perp bisector of \overline{MS}
 ③ OU where O is the midpt of \overline{MS} & U is the midpt of \overline{SE}