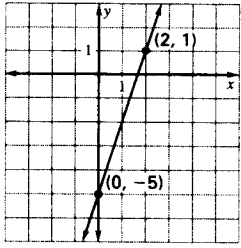


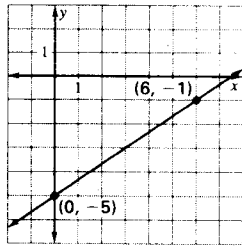
# Ch. 4 Cumulative Review

## Cumulative Review

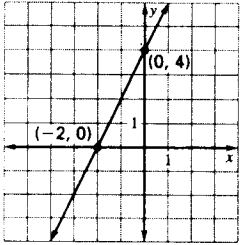
1.  $-\frac{9}{13}$  2.  $-11$  3.  $-\frac{1}{11}$  4. 2 5. 4 6.  $-4$   
7. 2 8.  $\frac{1}{5}$  9.  $x \geq 1$  10.  $3 > x > 2$   
11.  $x \leq 2$  or  $x \geq 5$  12.  $x \geq \frac{5}{2}$  13.  $x < \frac{5}{2}$   
14.  $x > 4$  15. no 16. yes 17. yes 18. no  
19. yes 20. yes  
21.



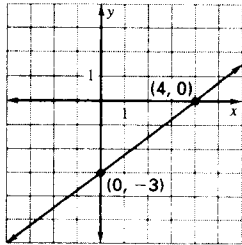
22.



23.



24.



25.  $y = 5x - 2$  26.  $y = -5x - 3$   
27.  $y = \frac{1}{2}x + 4$  28.  $y = -\frac{2}{3}x + 6$   
29.  $y = -\frac{2}{5}x - 3$  30.  $y = 3$  31.  $y = 3x$   
32.  $y = -\frac{2}{3}x + 5$  33.  $y = 5x - 6$  34. (5, -1)  
35. (4, -2) 36. (-1, 0) 37.  $(\frac{1}{2}, 1)$  38.  $(\frac{1}{3}, \frac{2}{3})$   
39. (10, 6) 40.  $f(x, y) = x - 6y - 12; -20$   
41.  $f(x, y) = x + 2y + 8; 9$

42.  $f(x, y) = -x - \frac{3}{2}y + 4; 16$   
43.  $f(x, y) = -\frac{2}{3}x + \frac{5}{3}y - 2; -8$   
44.  $f(x, y) = -\frac{3}{2}x + 3y + 5; 14$   
45.  $f(x, y) = -\frac{2}{3}x + \frac{4}{3}y - 3; 11$   
46. (0, 1, -2) 47. (3, 4, -7) 48. (2, 0, -3)  
49. 5, -9 50. 3, -5 51. 1, 5 52. 7, 4  
53. (5, -1) 54.  $(0, -\frac{1}{2})$  55. (5, 1, 0)  
56. 236 57. 48

Alg 2  
Honors  
Mid-Term  
Prac. Exam  
Answers

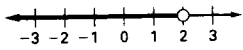
# Ch. 5. Cumulative Review Answers

## Cumulative Review

1. 24 2. 25 3. -25 4. 14 5. 12 6. 12

7.  $\frac{16}{45}$  8. 2

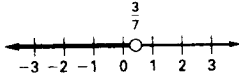
9.  $x < 2$



10.  $x \leq -\frac{4}{3}$



11.  $x < \frac{3}{7}$



12.  $x < 10$  13.  $-4 < x < 4$

14.  $5, \frac{-5}{3}$  15.  $x > 3$  or  $x < -2$

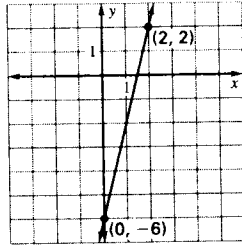
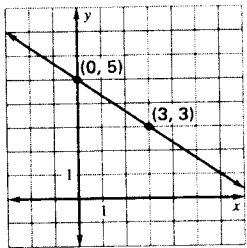
16.  $-4 < x < 8$  17. -23 18. 27 19. 9

20. 4 21. 0 22. undefined

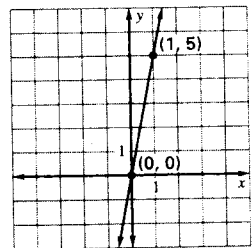
23. perpendicular 24. neither 25.  $y = 5x + 3$

26.  $y = 4$  27.  $y = \frac{2}{3}x - 2$

28. 29.



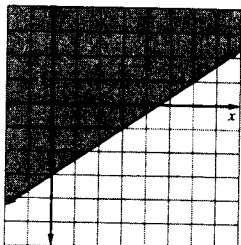
30.



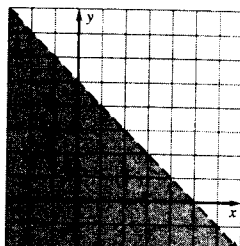
31.  $y = \frac{1}{3}x - \frac{8}{3}$

32.  $y = -2x + 12$  33.  $y = x + 1$

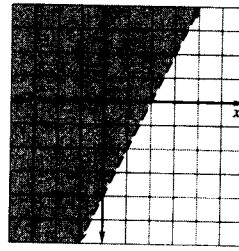
34.



35.



36.

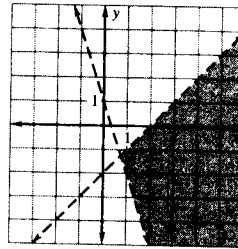


37. (1, 4)

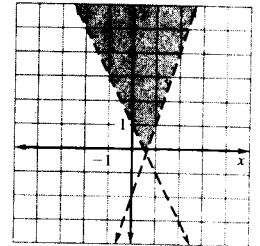
38. (-2, 4)

39. (2, 1, -4)

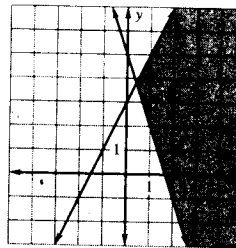
40.



41.



42.

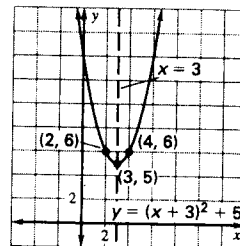


43.  $\begin{bmatrix} -8 & 12 \\ 12 & 2 \end{bmatrix}$

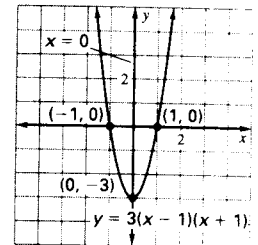
44. (1, 3) 45. (2, 2) 46. (3, -1, 0)

47. (-3, 4) 48. (1, -2) 49. (1, 0, -3)

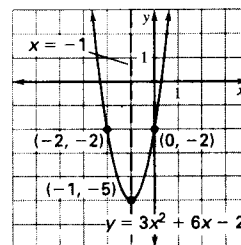
50.



51.



52.



53.  $x = (8, 2)$

54.  $-6 + \sqrt{33}, -6 - \sqrt{33}$  55. -4, -2

56.  $2 - 8i$  57.  $17 - i$  58.  $-3 - 3i$

59.  $-2 - 23i$  60.  $\frac{10}{17} + \frac{11}{17}i$  61.  $\frac{15}{17} + \frac{8}{17}i$