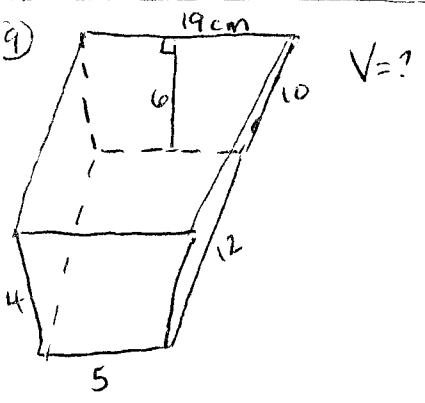
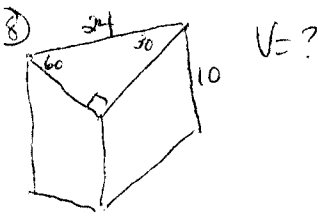
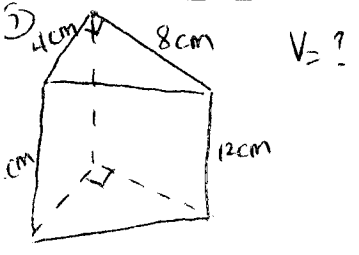
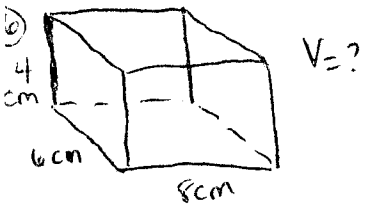
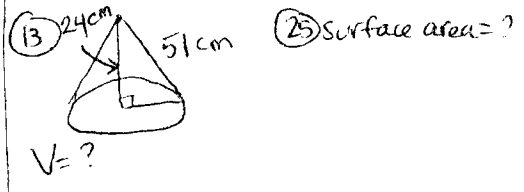
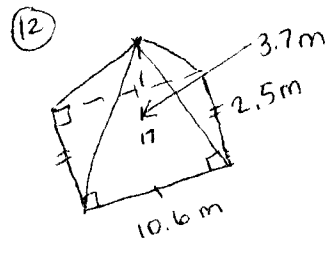
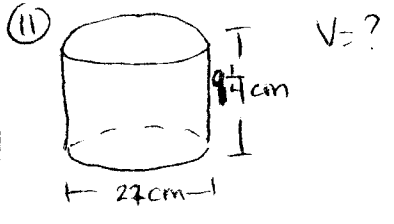
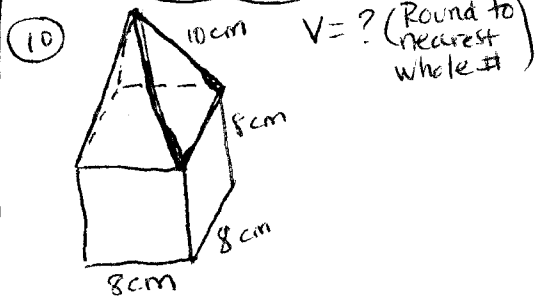


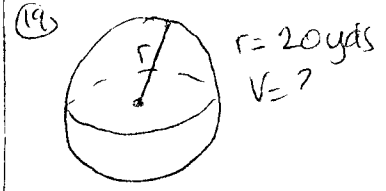
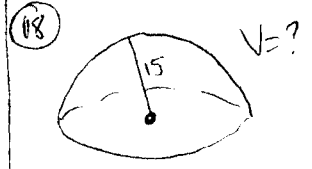
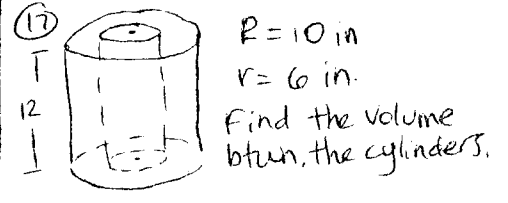
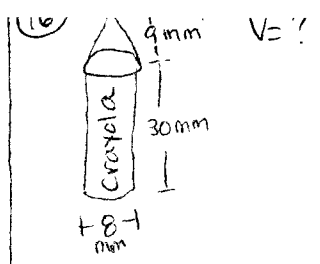
for Solids



~~Volume~~ **Volume** Pre-Test



14-15) Joke problems involving Algebraic expressions



20-21) 2 spicy problems

Geometry Honors

Ch. 10 Pre-Test

23. Find the height of a cylinder with radius 5 cm and a volume of 925π cubic cm.
24. Find the diameter of a sphere with volume $2048/3\pi$ cubic cm.
26. Find the surface area of a sphere with radius $7\sqrt{6}$ cm.
27. Find the volume of a cone with a height equal to 10 times the radius of the base. The area of the base is 45π square centimeters.
28. What is the volume of the greatest sphere that can be carved out of a cube with a volume of 8000 cubic centimeters.
29. Find the volume of a regular hexagonal pyramid with side length 8 and height of 6 cm
30. A solid metal rectangular pyramid has base edges of 12 and 4 and height of 15. The pyramid is melted and recast as a rectangular solid with bases congruent to the base of the pyramid. Find the height of the rectangular solid.
33. A cube has a total area of 384 square meters. Find the volume of the cube.
34. How many whole scoops of ice cream can fit into a cylinder with a diameter of 19 cm and a length of 10 cm if each scoop of ice cream has a diameter of 7 cm?
35. A lead rectangular prism has a base area of 50 square cm. and a height of 12 cm. If the prism has a density of .45 pounds per inch, what is its weight to the nearest pound.
36. Find the density of a steel ball with diameter of 14 cm and a mass of 350 grams.
37. If an irregular object is placed into a cylinder with a diameter of 16 cm and a height of 5 cm and displaces the water 3.2 cm, what is the object's volume?